

YOSHOKU

Yoshoku is a Japanese manga matcha café.

With the taste of Japanese pop culture, our cafés will be a place to meet friends, to grab a Lemonica drink, a lunchtime sandwich and be totally instagrammable.





## Yoshoku Café

Yoshoku in Japanese means Western Food.

We have brought back to the UK Western dishes that have enjoyed a uniquely Japanese twist.

On bustling campuses & streets our Japanese matcha is the perfect drink for those seeking vitality, reduced caffeine, calm and focus.

Our delicious savoury sandwiches, fruit sandos and sweet treats fuel work, study, sport and leisure time.





**MATCHA  
MOUNT FUJI**  
CHOOSE YOUR CAKE & GELATO



**ROSE  
MATCHA LATTE**  
WITH COLLAGEN



**PINA COLADA  
MATCHA LATTE**  
WITH PINEAPPLE



**BLUEBERRY  
MATCHA LATTE**  
WITH BLUEBERRIES



**VANILLA  
MATCHA LATTE**



**COCONUT  
MATCHA LATTE**  
WITH FLAKES



**STRAWBERRY  
MATCHA LATTE**  
IN A CAN!



**WHITE CHOCOLATE  
& MINT**



**LAVENDER  
MATCHA LATTE**  
WITH CBD



**BLUE CURAÇAO  
& MINT**



**JAPANESE LEMONADE  
BY LEMONICA**  
STRAWBERRY | MATCHA | ORIGINAL



**CHERRY  
MATCHA LATTE**



**YOSHOKU**

TRANSPORT YOURSELF BACK TO 1964 TOKYO, WHERE CULINARY CREATIVITY MET TRADITION AT BENISHIKA, A QUAIN COFFEE SHOP. INSPIRED BY A VISION FOR SIMPLICITY, OUR FOUNDER REVOLUTIONIZED PIZZA, USING BELOVED **SHOKUPAN MILK BREAD**. THIS MARKED THE BIRTH OF OUR YOSHOKU SLICE, A TIMELESS BLEND OF JAPANESE AND WESTERN INNOVATION AND HERITAGE - WHICH IS WHAT **YOSHOKU** MEANS. **EACH SLICE TELLS A TALE** OF JAPANESE CRAFTSMANSHIP, INVITING YOU TO SAVOUR A PIECE OF HISTORY.

JOIN US ON A JOURNEY WHERE TRADITION MEETS TASTE, MAKING EVERY BITE A CELEBRATION OF BENISHIKA'S LEGACY.

## Shokupan Sandwiches

Made with authentic Japanese Shokupan bread, our good-sized sandwiches provide a healthy, filling meal when customers are on the go.

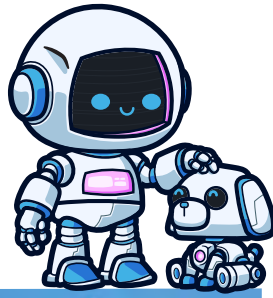


## Shokupan Slice

Our Shokupan cheese toast is a mouthwatering bite to tempt all, from young to old.

yoshokumatcha.com  
info@yoshokumatcha.com

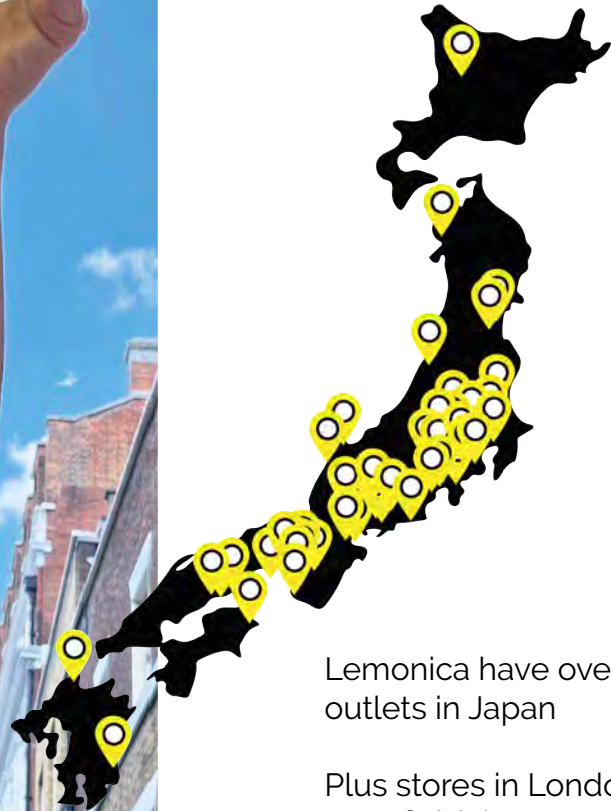




## Lemonade by Lemonica

This cool, cult Japanese lemonade company are our brand partners.

Using the whole of the lemon in their zesty secret recipe mixes well with our brand.



Lemonica have over 100 outlets in Japan

Plus stores in London at Westfield, (Next to Apple)

Baker Street  
(Near Madam Tussauds)

and soon:  
Westfield Holland



## Sample Menu

Reflecting the fusion of Japanese and Western dishes, our team brings together the best of East and West.

### Food

#### Yokohama Shokupan sandwiches

Vegan Egg (Tofu) and Avocado Sandwich  
Teriyaki Chicken Sandwich with Lemon Butter  
Japanese Egg Mayonnaise Sandwich

#### Shokupan Toasted Cheese Slices

Cheese & Tomato  
Vegetarian

#### Shokupan Fruit Sando

(Japanese fruit sandwiches)  
Strawberry & Matcha cream  
Kiwi & Strawberry

#### Matcha Mount Fuji with Italian Gelato

Sakura - Cherry Blossom  
Green Tea (Matcha)  
Fior di Latte (Vanilla)  
Strawberries & Cream  
Chocolate  
Guinness

### Gelato

In the above flavours

### Matcha Cookies

Matcha Brownies

Matcha Protein Balls

### Drinks

#### Lemonade by Lemonica

Fresh lemonade in Still, Fizzy or Frozen  
Original  
Pink Grapefruit  
Kiwi  
Strawberry  
Matcha

#### Tea

Matcha (Green)  
Yorkshire Tea

#### Coffee

100% Arabica  
Decaffeinated

#### Canned Drinks

served in resealable cans:  
Yoshoku still water  
Yoshoku sparkling water







Our pop-up café in London last Summer was very popular with the student and youth market. Our iced matcha lattes, Japanese gelatos and sandos, with our signature Matcha Mount Fuji sold well.





# 800

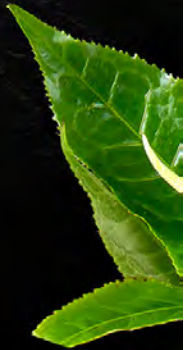
## YEAR OLD FARM IN KAGOSHIMA, JAPAN



### Matcha

Yoshoku organic matcha is the finest Ceremonial Quality, Latte Quality and Culinary Quality tea from Japan.

Cultivated in Japan since the 1100s, the heritage of this tea growing area is combined with contemporary farming techniques to supply Yoshoku with consistently excellent quality tea.



Our Ceremonial Grade Matcha is the highest quality grade from the best tea farms in Japan. In July 2025, it was awarded the prestigious Great Taste award.

Yoshoku Latte Grade matcha is high quality organic matcha, which enjoys a texture that beautifully blends with foamed milks, purees and ice to create delectable lattes and smoothies.

Our organic Culinary Grade matcha is perfect for adding to your sweet and savoury baked treats.





Our organic Ceremonial Grade tea is the finest in Japan. Grown in the Kagoshima District this region is at the forefront of organic tea cultivation.

Due to the naturally fertile, volcanic soils, combined with mild climate and favourable geography of Kagoshima, our matcha has many health-giving properties.

Our pure, single source Japanese matcha has very high levels of polyphenols and anti-oxidants, plus vitamin C, more so than ordinary green tea - which makes Yoshoku matcha most beneficial to good health.

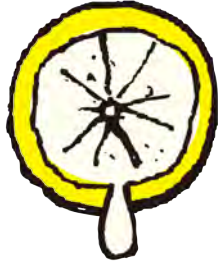


KAGOSHIMA DISTRICT JAPAN



Our organic matcha has met the meticulous Japanese Organic Standard. We are proud to display the JAS logo.





# Lemonade by Lemonica

The first three drinks in this range will soon be appearing in Lemonade by Lemonica and Yoshoku outlets in the UK.



NOTE: EACH FLAVOUR HAS A DIFFERENT COLOUR AND NUMBER, THE COLOUR ALSO FEATURES IN THE CHARACTER'S CUP. WHEN CBD IS ADDED, A PURPLE TRIANGLE APPEARS ON THE FRONT AND IN THE CENTRE OF THE CUP.





## Ruff Ryders

Epic 90's hip hop label from New York asked us to help develop three drinks for them.

We partnered with Aromasa, one of Europe's largest flavour houses and will soon be bringing these to the UK market.

**MATCHA RASPBERRY**



**MATCHA LEMONADE**



**MATCHA MUSHROOM SUPERBLEND**





## Matcha Sticks

Yoshoku Ceremonial Great Taste Matcha 3-in-1 sticks (pre-mixed matcha powder, sweetener and creamer). Designed for on-the-go consumption, highly favoured for their portability, consistent flavour, and ease of preparation, allowing customers to skip the traditional, time consuming bamboo whisking.

As consumers seek to recreate expensive coffee shop beverages at home or on-the-move consumption, these single-serve sticks offer a budget-friendly, easily accessible alternative to be enjoyed hot or chilled.





Yoshoku Matcha Beer  
The light, refreshing taste  
of an IPA crafted with the  
pure organic matcha  
from Kagoshima, Japan.



yoshokumatcha.com  
info@yoshokumatcha.com